

# ≡ National Trends: ITE Commencements Factsheet 2019

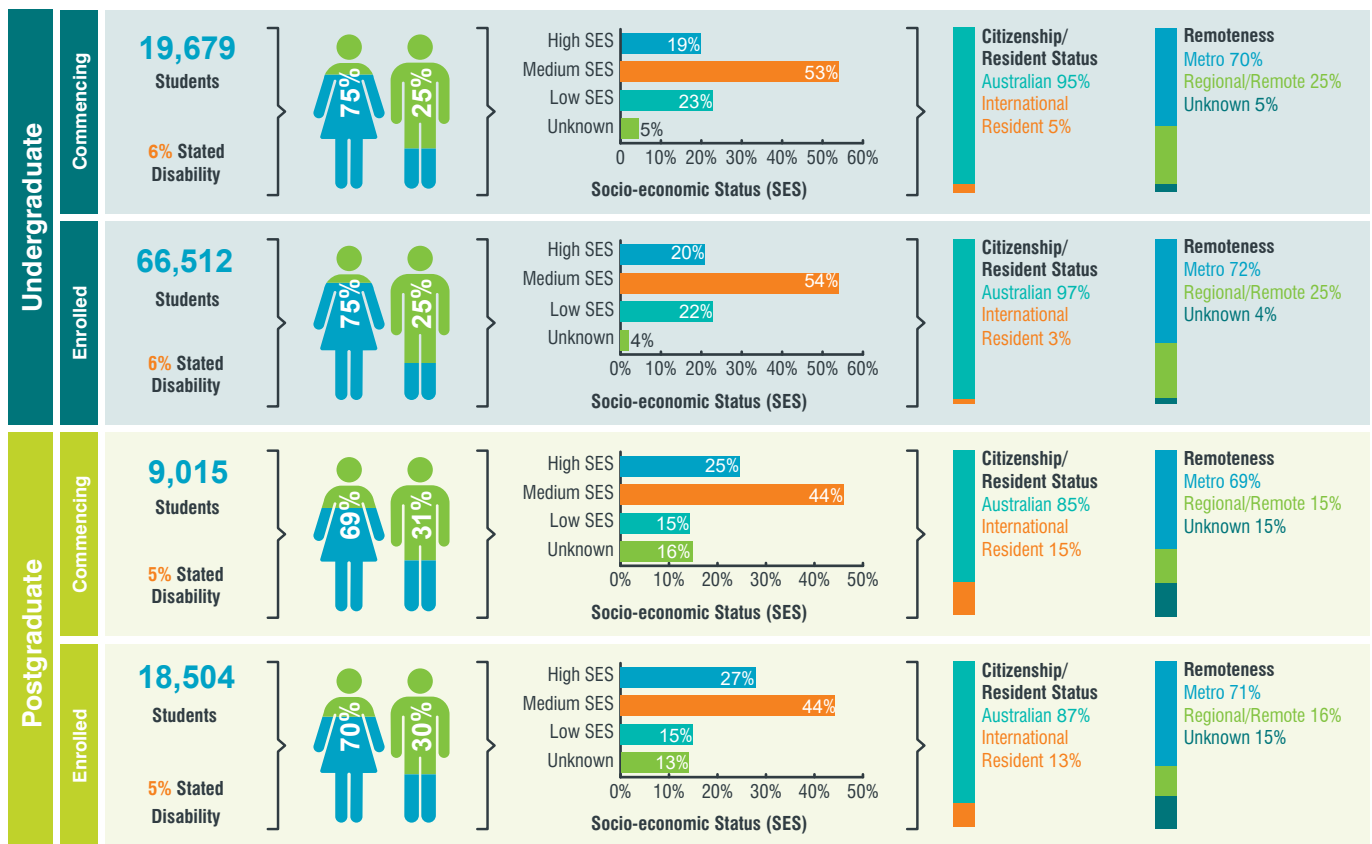
## Commencements and enrolments in 2019

The demographic profile of all students commencing and enrolled ITE in 2019: The characteristics provide an insight into the diversity and social equity that exists in the ITE student population.

The population of students enrolled or commencing has been compared across field of education and qualification type to identify similarities and differences across a range of characteristics including gender, socio-economic status, citizenship, and remoteness.

'Enrolled ITE students' refers to students who commenced, continued or completed an ITE program in 2019, regardless of when they commenced.

Characteristics of all undergraduate and postgraduate ITE students, 2019



Characteristics of ITE students by detailed field of education, 2019

